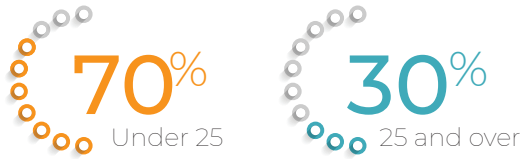
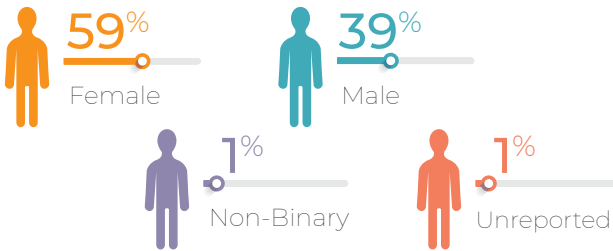


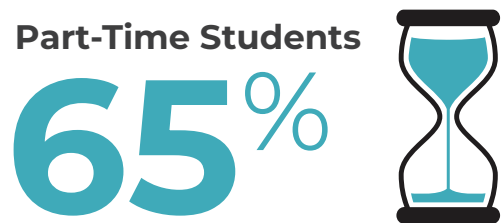
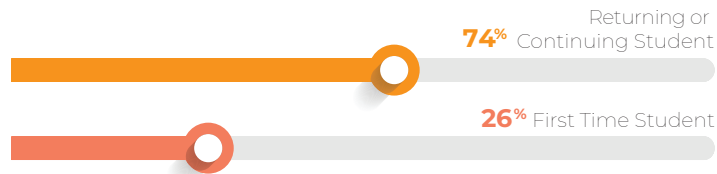
Age



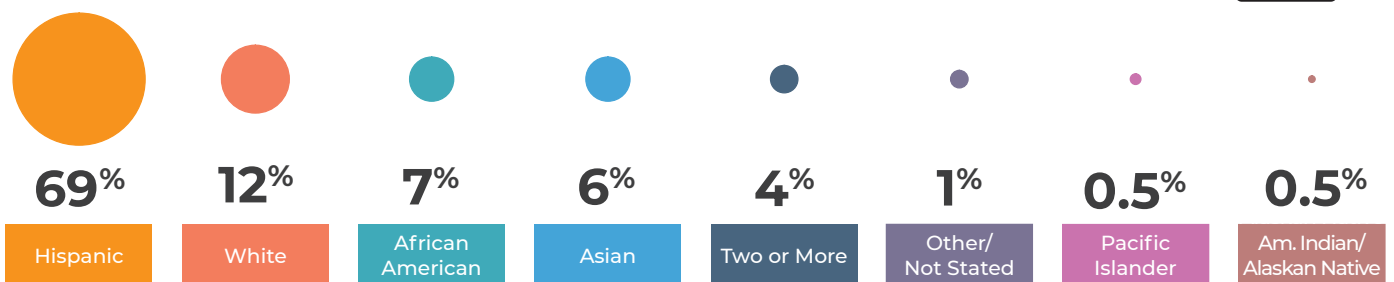
Gender



Fall Student Enrollment by Type

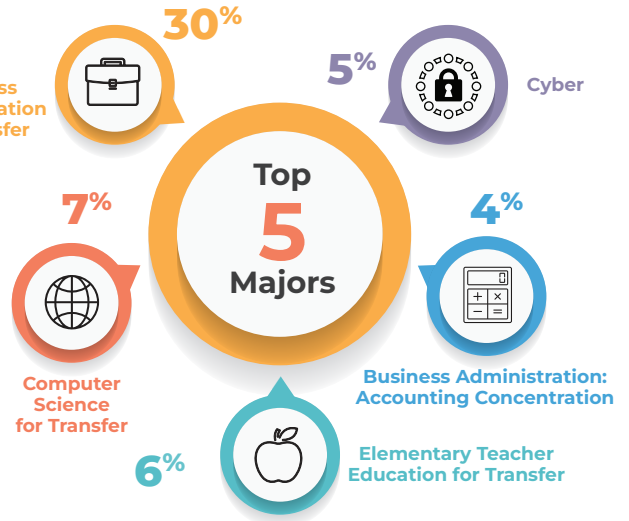
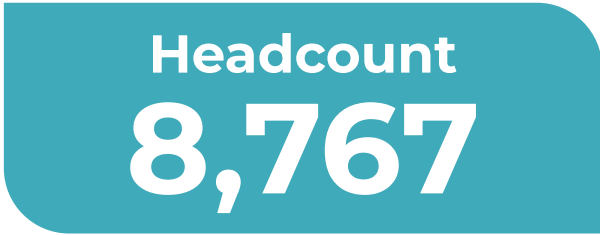


Race

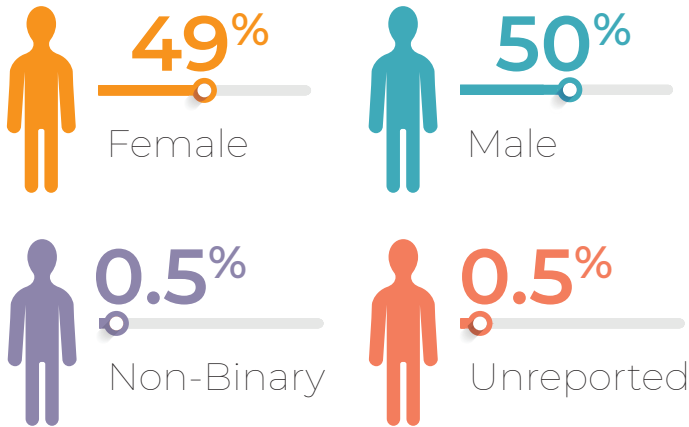


CTE Quick Facts Fall 2025

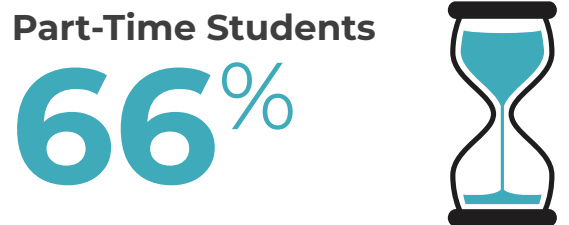
As of Census



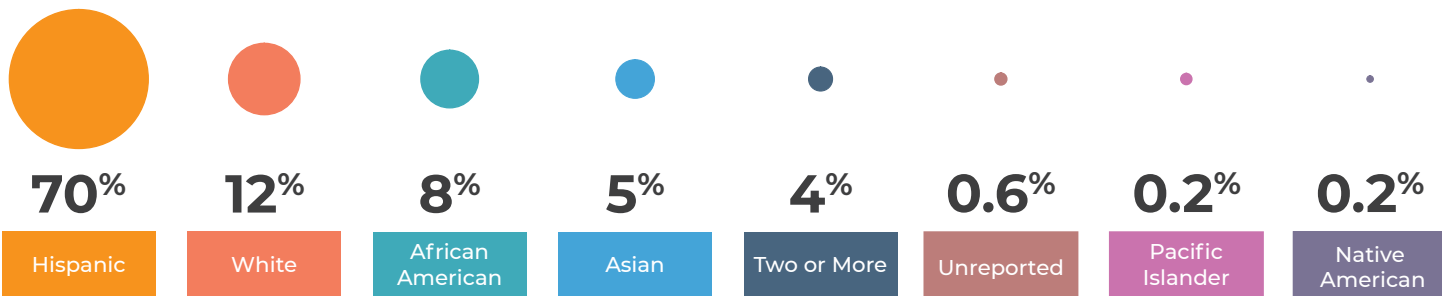
Gender



Fall Student Enrollment by Type

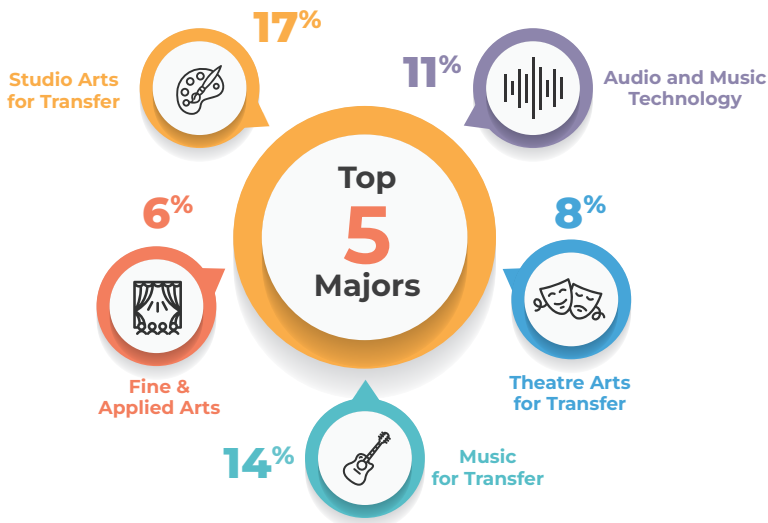
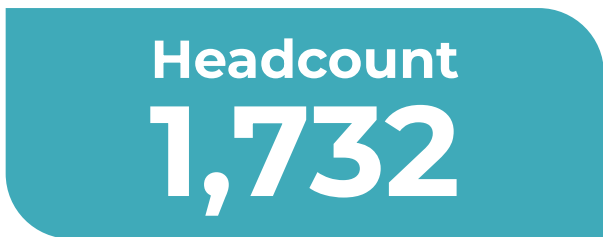


Race

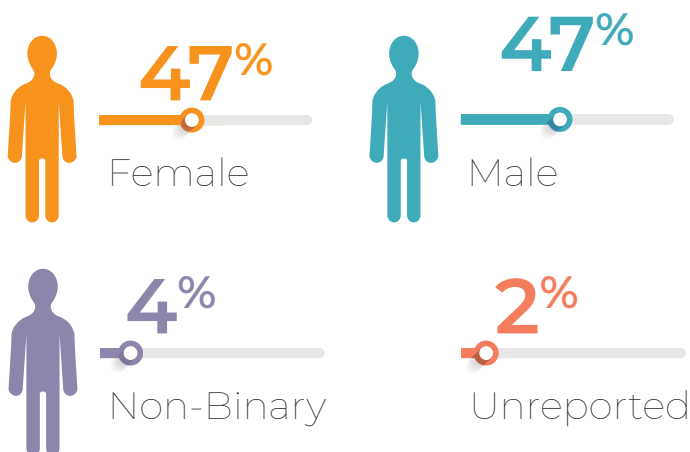


F&PA Quick Facts Fall 2025

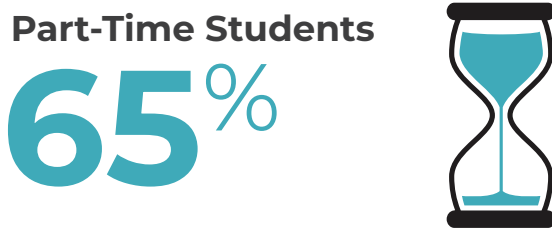
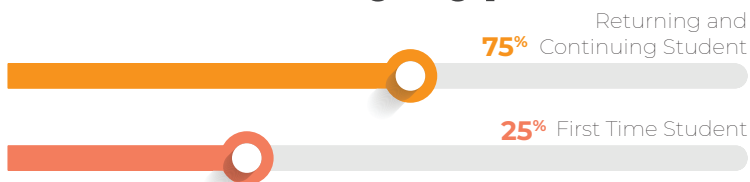
As of Census



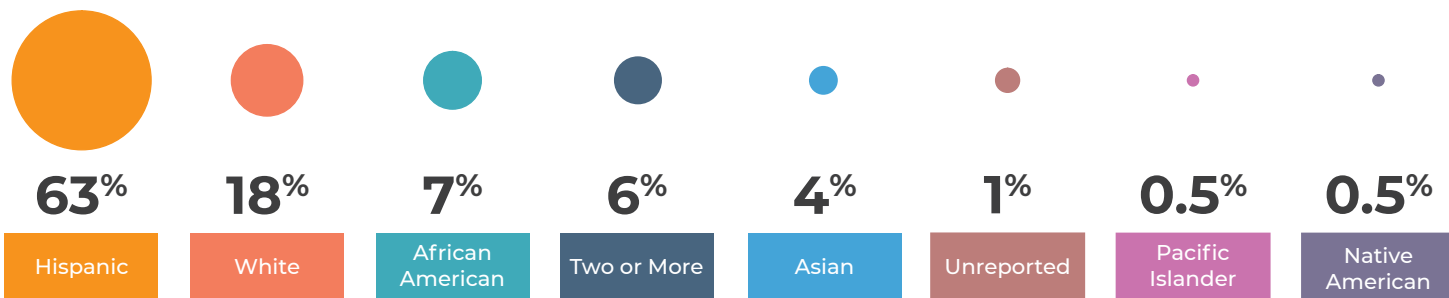
Gender



Fall Student Enrollment by Type

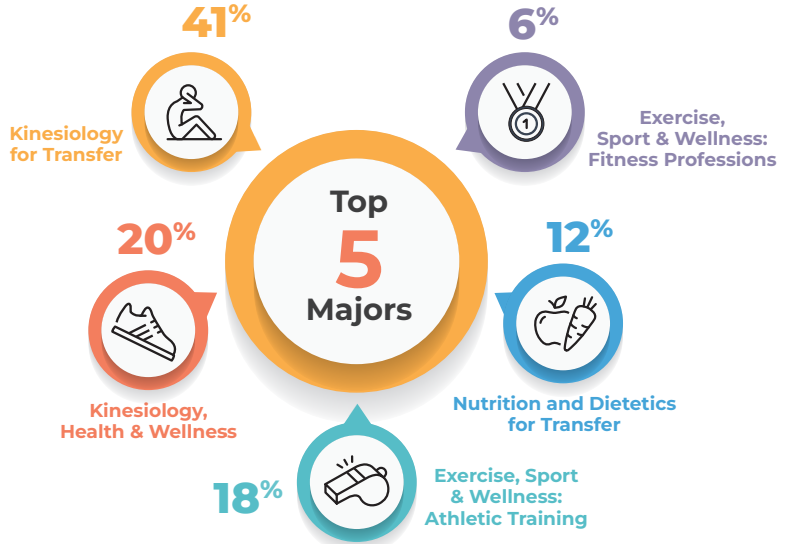


Race

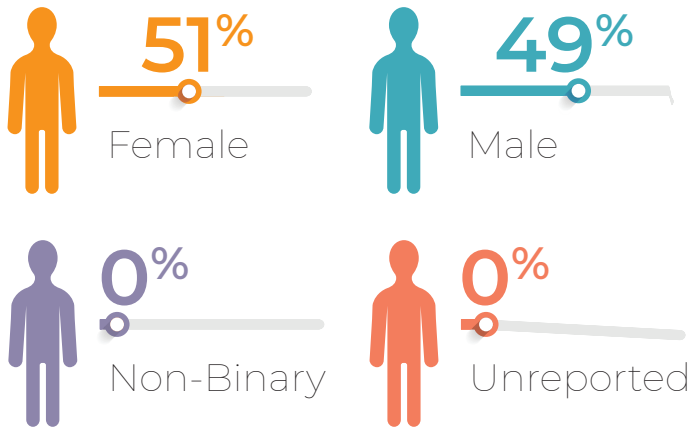


Kinesiology Quick Facts Fall 2025

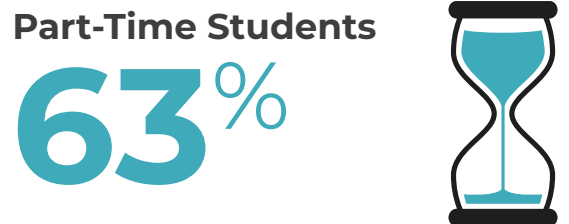
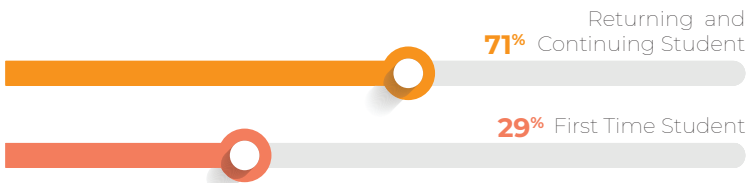
As of Census



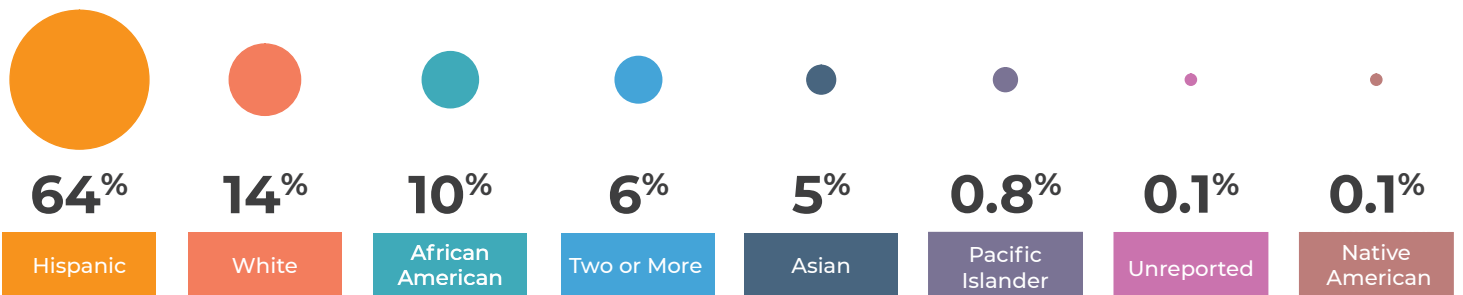
Gender



Fall Student Enrollment by Type



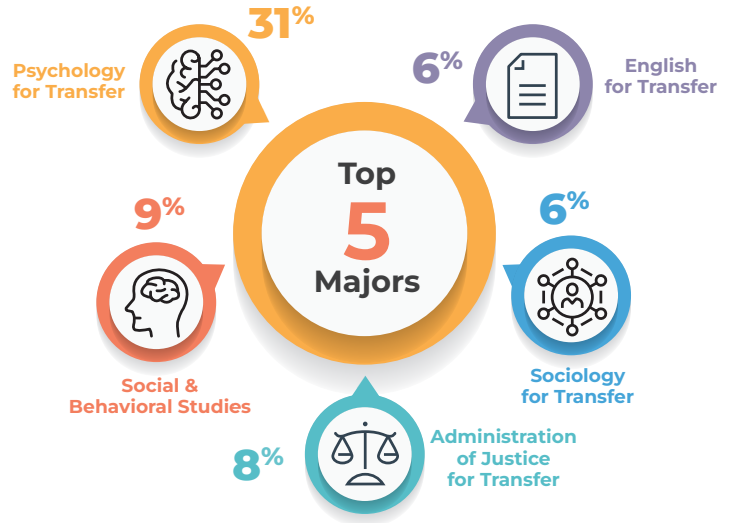
Race



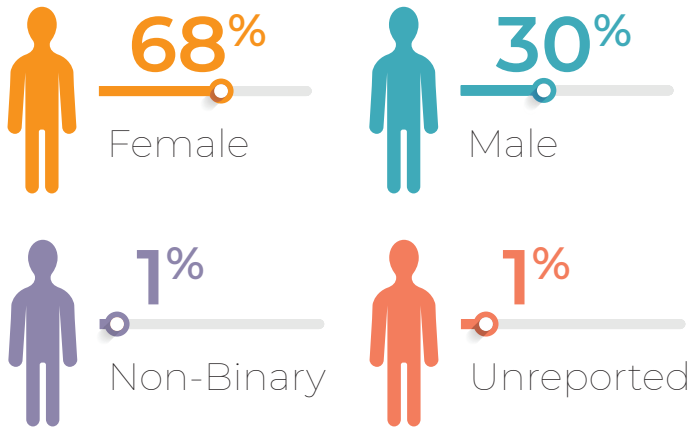
LHSS Quick Facts Fall 2025

As of Census

Headcount
3,969



Gender



Spring 2025 Course
Success Rate
70%

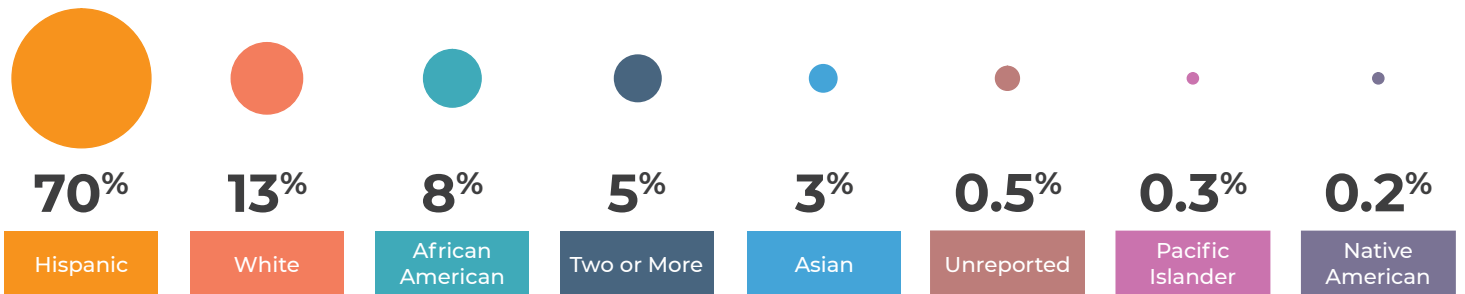
Fall Student Enrollment by Type



Full-Time Students
38%

Part-Time Students
62%

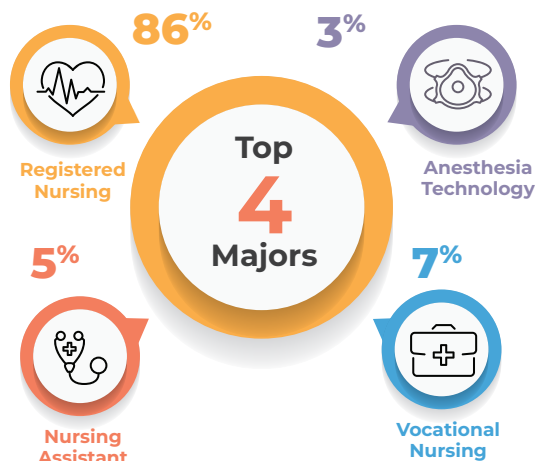
Race



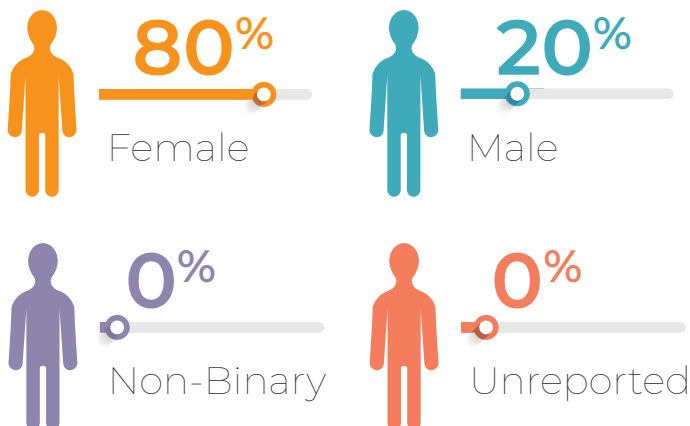
Nursing Quick Facts Fall 2025

As of Census

Headcount
4,795

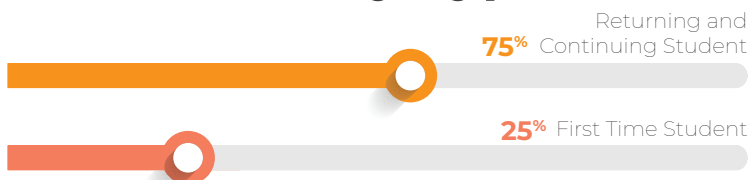


Gender



Spring 2025 Course
Success Rate
83%

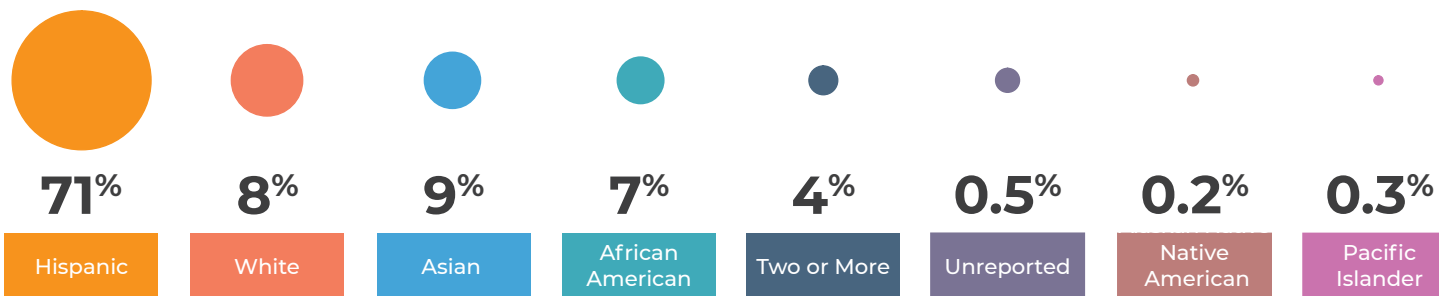
Fall Student Enrollment by Type



Full-Time Students
31%

Part-Time Students
69%

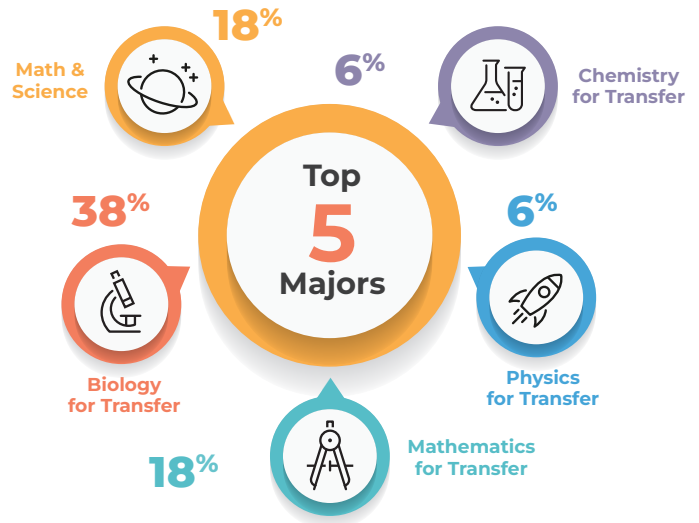
Race



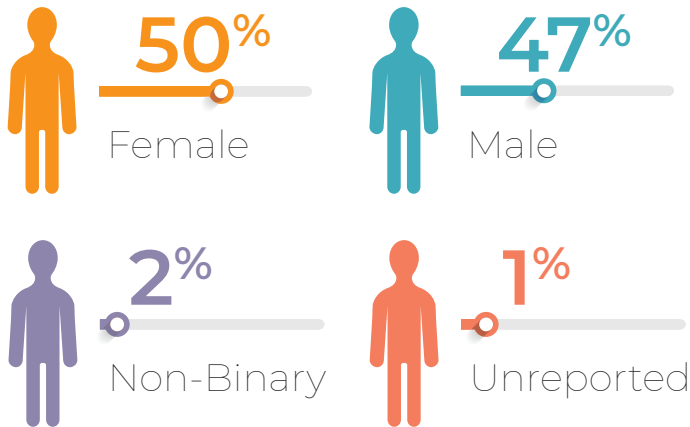
STEM Quick Facts Fall 2025

As of Census

Headcount
2,860

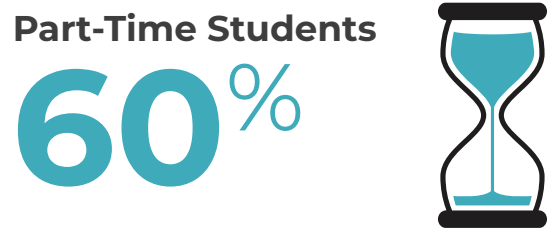


Gender



Spring 2025 Course
Success Rate
62%

Fall Student Enrollment by Type



Race

